



SECONDARY IHD TRANSITION TO HYBRID LEARNING - FEBRUARY 16

What Has Changed & What to Expect

LAST UPDATED BY
SHAKOPEE PUBLIC SCHOOLS
DISTRICT OFFICE

February 4, 2021

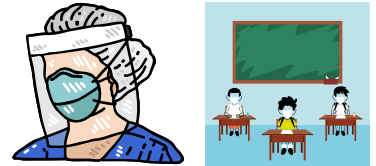


WHAT HAS CHANGED & WHAT TO EXPECT

This guide is meant to serve as a brief overview of changes to COVID-19 student/parent and staff guidelines associated with hybrid learning for secondary IHD students. This guide also includes general district COVID-19 health and safety updates. Changes noted in this guide are a result of the Minnesota Department of Education's updates to the Safe Learning Plan (December 2020) that Shakopee Public Schools must abide by. Please note that this guide is also considered an updated resource to the district's [Pandemic Response Plan](#), which was sent to all district families in September 2020, and still available on the district website.

Efforts to limit cohort intermixing (i.e mixing of students groups) will still be present throughout the day and are automatically included in many of the noted efforts. Additionally, cleaning and disinfection procedures will continue throughout the district.

FACE MASKS/SHIELDS



ALL STUDENT CHANGES

- All 6-12 students (including Tokata Learning Center) are expected to wear face masks/coverings the entire day, even during indoor gym and on school transportation.
 - Exceptions include when a student is eating.
- Face masks/coverings are optional during outdoor school day activities.
- Students who cannot tolerate a face covering due to a developmental, medical or behavioral health condition may be exempt from wearing a face covering and must wear a face shield instead.
 - An [exemption form](#), which can be obtained from a student's home school administration, must be signed by a parent/guardian and a medical authority.

ALL STAFF CHANGES

- All staff are expected to provide an extra layer of protection throughout the school day (indoor and outdoor). All staff are expected to simultaneously wear a face mask and face shield during the school day to provide the wearer with a greater level of personal protection than when wearing only a mask or only a shield.
- When staff are serving students in settings where seeing a person's lips is necessary and they do not have access to a clear face mask, they may choose to only wear a face shield.
- When staff are performing duties in which wearing a face mask and a face shield together creates a safety concern (eg. visual impairment while operating a vehicle, working in a kitchen, working in a lab, etc.), the staff member may wear only a face mask for that specific period of time.
- Face masks and shields will be provided by the District.

WHAT HAS CHANGED & WHAT TO EXPECT

A/B DAYS

SECONDARY STUDENTS - NO CHANGES

- Secondary students will keep the same 'A' or 'B' day designation that they were assigned in the beginning of the school year.
- Students and parents/guardians can access the A/B designation in Infinite Campus.
- Infinite Campus support modules can be [accessed here](#).

SCHOOL START/END TIME

SECONDARY STUDENTS - NO CHANGES

- Secondary students will keep the same school start and end times as well as block schedule as the beginning of the school year.
 - East and West Middle Schools: 4 period block schedule; 7:45am - 1:55pm
 - Shakopee High School: 4 period block schedule: 8:20am - 2:30pm
 - Tokata Learning Center follows components of the IHD program, but has additional flexibility in providing services due to the unique nature of their programs.

HYBRID AT HOME DAYS

SECONDARY STUDENT CHANGES

- Students will be given work during their in-school day to complete during their hybrid at home day. Work will also be posted in Canvas modules and the Canvas announcements section. The Canvas calendar will also reflect hybrid at home assignments.
- Students will mark themselves present in Infinite Campus during hybrid at home days. Teachers can provide support as needed.

PARENT RESOURCES

Parents/guardians can log into Canvas using their Canvas observers account to view their student's hybrid at home day assignments in the:

- Announcements section
- Calendar
- Student To-do list

Canvas support tools can be [accessed here](#).



GRADING

SECONDARY STUDENTS - NO CHANGES

- High School: Grades will be reported as A, B, C, P, I, or NG at the high school. Students with incompletes will be placed in a support program to complete the course following the end of a quarter.
- Middle School: Grades will be reported as A, B, C, P or NI at the middle school.

ACT TESTING

HIGH SCHOOL STUDENTS

- Per Minnesota Department of Education, required standardized tests such as MCAs and ACT will be administered in a hybrid learning model. Additional information will be sent by the Shakopee High School.

WHAT HAS CHANGED & WHAT TO EXPECT

SOCIAL DISTANCING

SECONDARY STUDENTS - NO CHANGES

- When spaces allows, six (6) feet of physical distance or more will be strongly encouraged between students.
- Staff will adjust learning spaces to accommodate all students, with assigned seats (whenever possible) focusing on a physical distance of six (6) feet or more.

ALL STAFF CHANGES

- Staff will maintain six (6) feet of distance with peers and students, when possible.
- When educators cannot be six (6) feet from students, they will add a clear barrier between themselves and student(s), when possible.



MEALS

SECONDARY STUDENT - NO CHANGES

- Secondary student meal times will continue to be held in the cafeteria with six (6) feet of distancing in lines and at tables.
- Photo snapshots of each table and student ID's will continue to occur at the high school for potential contact tracing purposes.

- Individual schools will provide more information relative to each building and space restrictions related to school meals.
- USDA free meals for all district students will continue throughout the remainder of the 2020/21 school year.



TRANSPORTATION

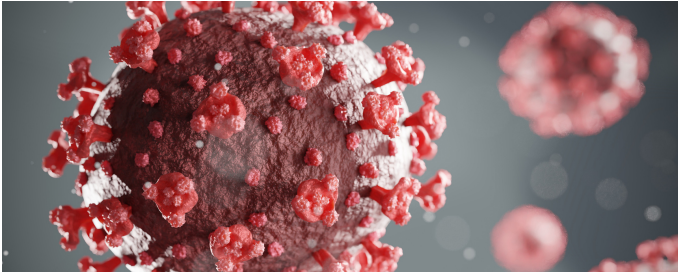
SECONDARY STUDENTS - NO CHANGES

- Secondary students will ride the same bus route (stop, time and bus unchanged).
- Reminder details are available in [parent portal](#).
- Buses will run at 33% capacity with assigned seating; students from the same household will be grouped together.

- Bus drivers will be six (6) feet from students when driving and wear a face mask/covering; the front row of each bus will be kept open.
- Increased fresh air circulation will occur during routes; students should dress for the weather when riding the bus.
- Students will load the bus in a back to front manner during morning routes.



COVID-19 SYMPTOMS, TESTING & PROTOCOL



HEALTH SERVICES PROTOCOL & COMMUNICATION

- In the event of exposure to COVID-19 at school, students will quarantine at home for 14 days from the date of last exposure, watching for symptoms of COVID-19.
 - A PCR COVID-19 test is recommended during quarantine 5-7 days after last exposure.
 - Additional details on quarantine period and types of tests are on the pages to follow.
- Families of students or staff who are close contacts will continue to be informed of exposure the same day that a lab confirmed positive COVID-19 PCR test is received. Speed, accuracy and safety are of utmost priority.
- When the Health Services team receives notification of a potential COVID-19 case, ALL situations are followed up on immediately and include support from the Scott County Infectious Disease Division and Minnesota Department of Health.
- Courtesy COVID-19 communications will be sent to each building on a weekly basis outlining school and district case rates.
- When a student or staff member has COVID-19 symptoms or receives a positive COVID-19 PCR test, the student, parent(s) and/or sibling(s) will stay home for the designated period.

COVID-19 SYMPTOMS

- Reminder that symptoms of COVID-19 can look like many other illnesses. The symptoms for children can look different than symptoms for adults. Many children have no symptoms at all and could infect others.
- More common COVID-19 symptoms: fever of 100.4 degrees Fahrenheit or higher; a new cough, or a cough that gets worse; difficulty or trouble breathing; and new loss of taste or smell.
- Less common COVID-19 symptoms: sore throat; nausea; vomiting; diarrhea; chills; muscle pain; excessive fatigue (being very tired); a new or severe headache; and new nasal congestion or a runny nose.
- If your student has one (1) common symptom or two (2) less common symptoms, they should stay home and follow the attendance line process noted below.

STAFF TESTING & VACCINES

- Staff will be offered COVID-19 PCR testing at school every 2-weeks.
- The COVID-19 vaccine will be offered to district staff based upon national and State priority orders, and available supply.

ATTENDANCE LINE REMINDERS

Students should stay home and the parent/guardian should contact their student's attendance line in the following situations:

- When a student has COVID-19 related symptoms.
- When a family member in their immediate household has COVID-19 symptoms and/or is in the process of being tested.
 - If a family member tests positive for COVID-19 (PCR test), the student is considered a close contact and must follow guidelines noted on the following

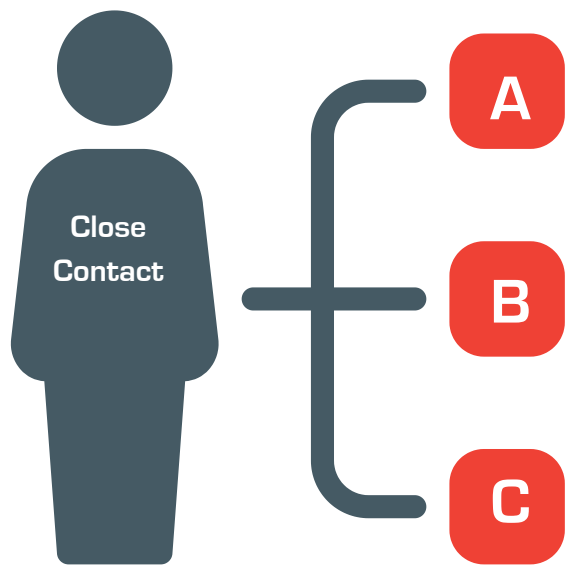
CLOSE CONTACT QUARANTINE GUIDELINES

When a student or staff member is exposed to a lab confirmed case of COVID-19 or tests positive to COVID-19, a series of communications occur to ensure the individual stays home in order to protect themselves and others around them. Below is a simplified breakdown of the guidelines, which includes recent updates to the quarantine period of a close contact. The safest option is always to quarantine for 14 days once the quarantine period has started. Please refer to the next page for clarification on definitions and additional Minnesota Department of Health Resources.

If a staff or student tests positive for COVID-19, they must stay home and isolate for 10 days and may only return to normal activities after that period if they are free from symptoms (if applicable) for at least 24 hours from the isolation end date. Instructions on return to school dates for staff or students with a positive COVID-19 PCR test will be provided by the District COVID School Nurse.

Close Contact Scenarios

to a Lab Confirmed, Positive PCR COVID-19 Test



Person you were exposed to IS in your immediate home or dwelling, and may or may not have symptoms. Required 14 day quarantine, no exceptions. Cannot test out or return early, even if you are symptom-free and/or receive a negative PCR COVID-19 test. The 14-day quarantine begins the day symptoms started OR day of exposure to someone with a positive PCR test or symptoms was contagious.

Person you were exposed to IS NOT in your immediate home or dwelling and you do NOT have symptoms. 14 day quarantine is still recommended, but you may opt for a 10 day quarantine. A negative COVID-19 PCR test is NOT required for this opt out. A district quarantine reduction form is required. See additional details below in Scenario B.

Person you were exposed to IS NOT in your immediate home or dwelling and you do NOT have symptoms. 14 day quarantine is still recommended, but you may opt for a 7 day quarantine if you have a negative COVID-19 PCR test taken at least five full days after you had close contact with the infected individual. You must also be symptom free. A district quarantine reduction form is required. See additional details below in Scenario C.

Scenario B: Additional Details



- You do not have any COVID-19 related symptoms at any time.
- The quarantine adjustment form must be submitted and approved. Forms can be found on the district website or obtained from your school nurse.

Scenario C: Additional Details



- You must have a negative PCR test, not an antigen test or antibody/blood test, and be symptom free.
- The test must be taken at least five full days after you had close contact with someone with COVID-19.
- Quarantine adjustment form must be submitted and approved. Forms can be found on the district website or obtained from your school nurse.

Important Definitions & Resources

PCR Testing: Polymerase chain reaction (PCR) is a test that detects genetic material of the SARS-CoV-2 virus that causes COVID-19. It is also called a molecular test. A swab is used to collect fluid from someone's nose or throat, or someone spits to collect saliva. The test tells if someone is infected right at the time the test. Results can take several days. This test is used to diagnose COVID-19 infection and it is considered quite accurate. This test can be used to determine early release from quarantine in the approved scenario.

Antigen Testing: Antigen tests detect certain proteins in the virus. They are often called rapid tests, though some PCR tests are also rapid tests. A swab is used to collect a fluid sample from the nose or throat. Results can be returned in 15 minutes. This test is used to diagnose whether someone has COVID-19 right now. This test cannot be used to determine early release from quarantine.

Close Contact to COVID-19: Close contact is defined as when a person is within 6 feet of someone with COVID-19 for 15 minutes or longer, at anytime during the 10 days of their diagnosed COVID-19 illness OR within two days from when they developed COVID-19 related symptoms OR the date they received a positive test (i.e. date of test) if they did not experience symptoms.

Close Contact of a Close Contact to COVID-19: Defined as someone that is exposed to a close contact (see above definition) that has NOT tested positive for COVID-19. This person's risk of contracting COVID-19 is no greater than in the general community and therefore they are not required to quarantine. Quarantine would only apply if an individual becomes a direct close contact to a lab confirmed COVID-19 case.

Quarantine: Quarantine is the period of time that a person exposed to a lab confirmed COVID-19 case stays home, monitors their COVID-19 symptoms and checks their temperature twice a day.

Isolation: Isolation is defined as the 10 day period that a person with COVID-19 symptoms, or a person that tests positive for COVID-19, stays home. The person should stay home and use a separate bedroom and bathroom, if possible, wear a mask when around household members and watch for serious symptoms that would indicate the need for emergency care. The 10 day period starts at the onset of symptoms or day of the positive COVID-19 test, whichever is first. Upon the 10th day, if the person still has a fever/symptoms, then they must continue to isolate until fever-free (without fever reducing medication) for a minimum of 24 hours and symptoms have improved.

Contact Tracing: In the case of a positive COVID-19 test, the Minnesota Department of Health is notified and information passed on to Scott County Public Health. Scott County Public Health, in partnership with Shakopee Public Schools, contacts the impacted person to find out who they have come in contact with since the onset of symptoms or 48-hours prior to their positive COVID-19 test. The County also provides additional resources related to isolation procedures. The person's contacts are notified via phone by the County and informed of quarantine guidelines. The impacted person's name will only be released to their contacts with prior verbal consent.

Additional Resources

[Minnesota Department of Health Close Contacts, Tracing and Quarantine Guidance](#)

[COVID-19 Testing Locations in Scott County](#)